

NOTES

ALL WET MIL THICKNESS MEASUREMENTS BELOW SHALL BE MEASURED USING A NOTCHED THICKNESS GAGE PER ASTM D4414.

NOTE 1: EITHER PEEL AND STICK FLASHING OR 3 LAYERS CONSISTING OF ENVIRO-DRI® MEMBRANE/JOINT FABRIC/ENVIRODRI MEMBRANE. THE FIRST LAYER SHALL BE ENVIRO-DRI MEMBRANE IN A CONTINUOUS FILM OF 13-16 WET MILS ON THE SHEATHING/SUBSTRATE MATERIAL AND 2 LAYERS CONSISTING OF JOINT FABRIC EMBEDDED INTO THE FIRST ENVIRO-DRI LAYER FOLLOWED BY 20 WET MILS OF ENVIRO-DRI MEMBRANE OVER AND SOAKED THROUGH THE FABRIC, LEAVING A SMOOTH, CONTINUOUS FILM THAT ALL BUT OBSCURES THE FABRIC TEXTURE.

NOTE 2: EITHER PEEL AND STICK FLASHING OR 5 LAYERS CONSISTING OF ENVIRO-DRI MEMBRANE/JOINT FABRIC/ENVIRO-DRI MEMBRANE/JOINT FABRIC/ENVIRO-DRI MEMBRANE. THE FIRST LAYER SHALL BE ENVIRO-DRI MEMBRANE IN A CONTINUOUS FILM OF 13-16 WET MILS ON THE SHEATHING/SUBSTRATE MATERIAL PLUS 4 LAYERS CONSISTING OF THE FOLLOWING. JOINT FABRIC EMBEDDED INTO THE FIRST ENVIRO-DRI LAYER FOLLOWED BY 20 WET MILS OF ENVIRO-DRI MEMBRANE OVER AND SOAKED THROUGH THE FABRIC FOLLOWED BY A SECOND LAYER OF JOINT FABRIC EMBEDDED INTO THE MEMBRANE OVER THE FIRST LAYER OF FABRIC AND COATED OVER AND SOAKED THROUGH WITH ANOTHER 20 WET MILS OF ENVIRO-DRI MEMBRANE LEAVING A SMOOTH, CONTINUOUS FILM THAT ALL BUT OBSCURES THE FABRIC TEXTURE.

NOTE 3: FOR ACCESSORIES WITH FLANGES (ELECTRICAL BOXES, VENTS, PENETRATION TREATMENTS, ETC.) THE FLANGES SHALL BE INSTALLED OVER ENVIRO-DRI MEMBRANE INSTALLED AT ITS STANDARD FIELD APPLICATION THICKNESS, 13-16 WET MILS. FLANGED ACCESSORIES SHALL EITHER BE FLASHED WITH PEEL AND STICK FLASHING OR 3 LAYERS CONSISTING OF ENVIRO-DRI MEMBRANE/JOINT FABRIC/ENVIRO-DRI MEMBRANE. THE FIRST LAYER SHALL BE ENVIRO-DRI MEMBRANE CONSISTING OF JOINT FABRIC EMBEDDED INTO THE FIRST ENVIRO-DRI LAYER FOLLOWED BY 20 WET MILS OF ENVIRO-DRI MEMBRANE OVER AND SOAKED THROUGH THE FABRIC, LEAVING A SMOOTH, CONTINUOUS FILM THAT ALL BUT OBSCURES THE FABRIC TEXTURE.

NOTE 4: ENVIRO-DRI COUNTER FLASHING FABRIC SHALL BE INSTALLED BY EMBEDDING A MINIMUM OF 1 INCHES OF ENVIRO-DRI COUNTER FLASHING INTO 20 WET MILS OF ENVIRO-DRI MEMBRANE. THEN THE TOP EDGE OF THE COUNTER FLASHING SHALL BE SEALED AS PER NOTE 5 BELOW USING JOINT FABRIC EMBEDDED INTO ENVIRO-DRI MEMBRANE INSTALLED A MINIMUM OF 1 INCH DOWN FROM THE TOP OF THE COUNTER FLASHING AND EXTENDING A MINIMUM OF $\frac{1}{2}$ INCH BEYOND THE CORNERS OF THE COUNTER FLASHING.

NOTE 5: ENVIRO-DRI JOINT FABRIC SHALL BE EMBEDDED INTO 13-16 WET MILS (STANDARD FIELD APPLICATION THICKNESS) OF ENVIRO-DRI MEMBRANE ON THE SHEATHING/SUBSTRATE AND SUBSEQUENTLY COATED AND IMPREGNATED WITH 20 WET MILS OF ENVIRO-DRI MEMBRANE LEAVING A SMOOTH CONTINUOUS FILM THAT ALL BUT OBSCURES THE FABRIC TEXTURE.



3735 Green Road, Beachwood, OH 44122
Phone : 866-209-2404

Project:

Detail: Enviro-Dri System Notes

This detail is intended for conceptual purposes only.

Drawn by: KAB

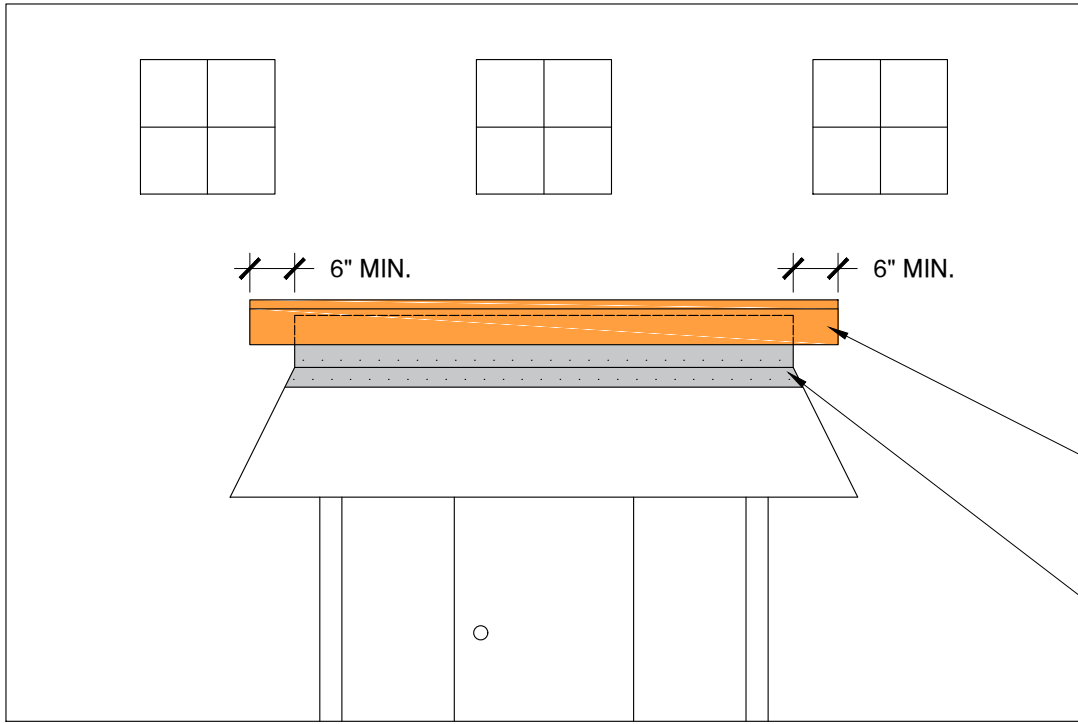
Checked by: JS

Scale: NTS

Date: 3/3/2021

File Name:

ED-NOTES



ENVIRO-DRI
MEMBRANE/FABRIC/
MEMBRANE

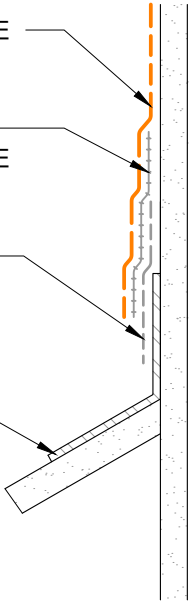
METAL FLASHING

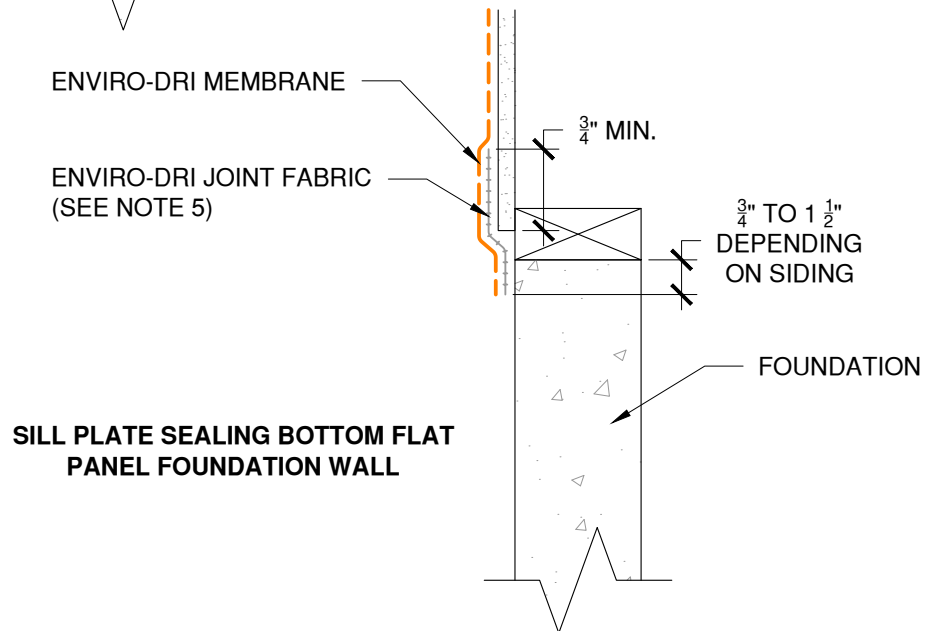
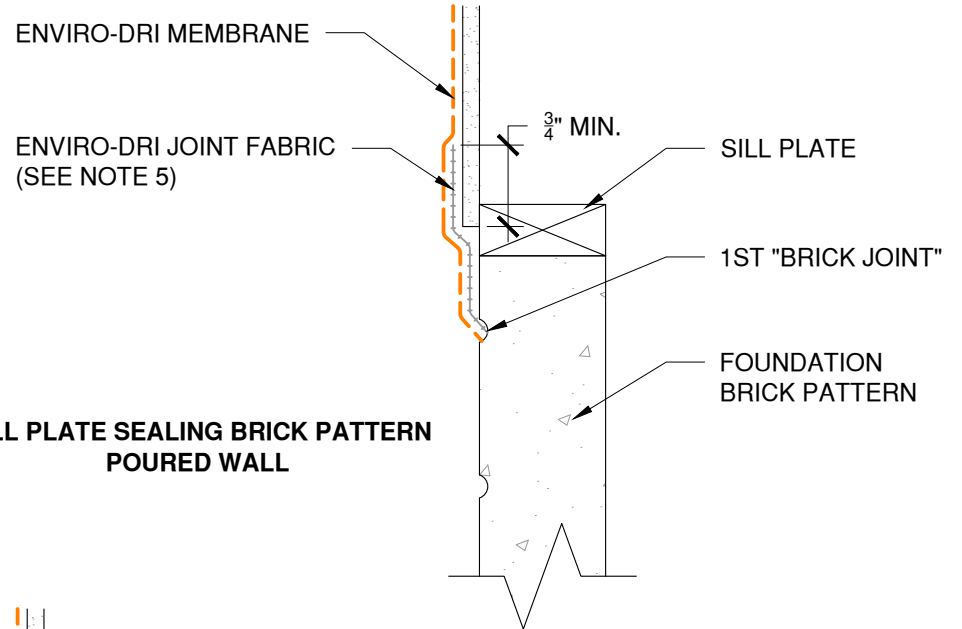
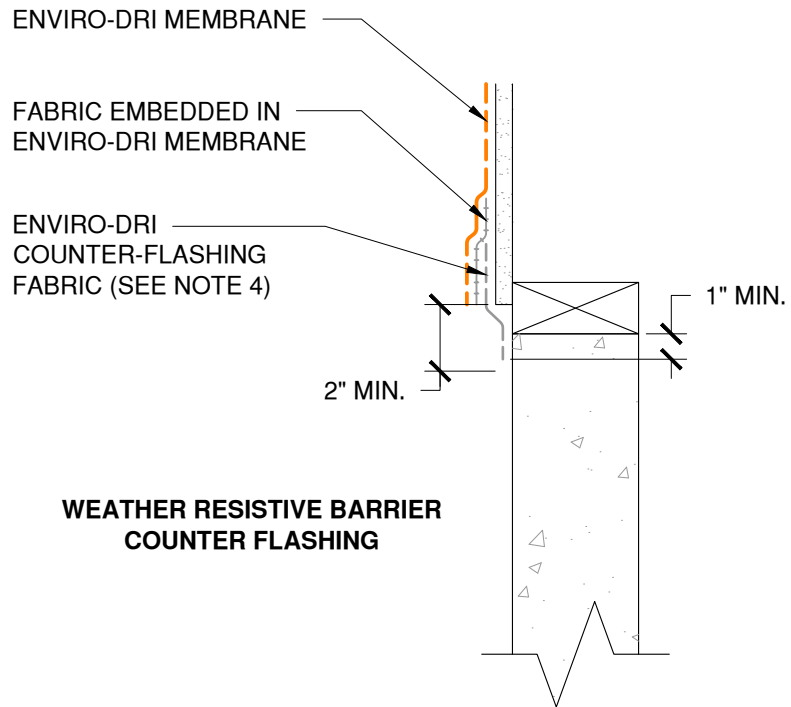
ENVIRO-DRI MEMBRANE

FABRIC EMBEDDED IN
ENVIRO-DRI MEMBRANE

ENVIRO-DRI
COUNTER-FLASHING
FABRIC (SEE NOTE 4)

METAL FLASHING





3735 Green Road, Beachwood, OH 44122
Phone : 866-209-2404

Project:
Detail: Enviro-Dri at Sill Plates

This detail is intended for conceptual purposes only.

Drawn by: KAB

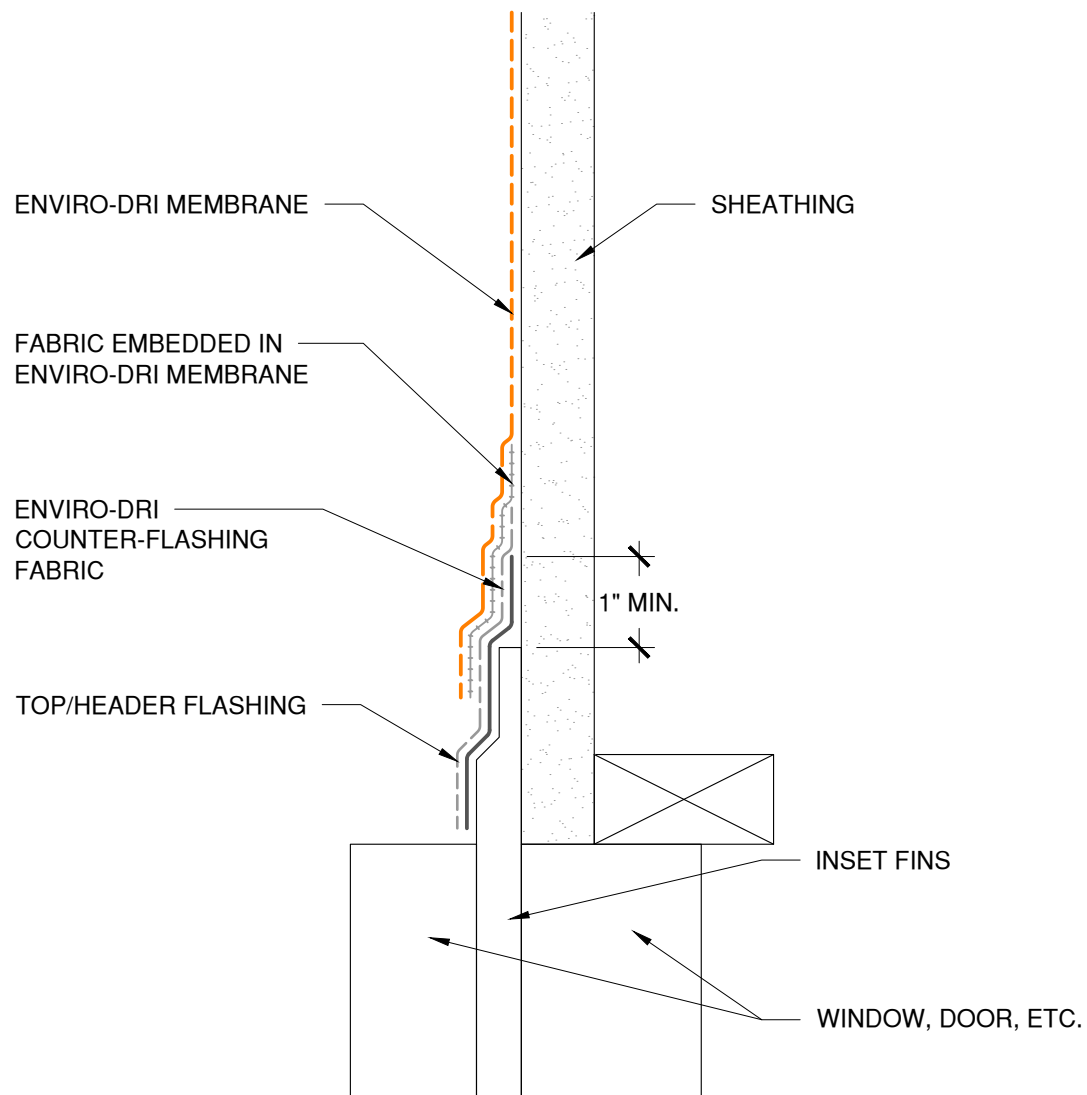
Checked by: JS

Scale: NTS

Date: 3/3/2021

File Name:

ED-F-02



3735 Green Road, Beachwood, OH 44122
Phone : 866-209-2404

Project:

Detail: Enviro-Dri at Typical Counter Flashing of Openings, Doors, Windows, ETC.

This detail is intended for conceptual purposes only.

Drawn by: KAB

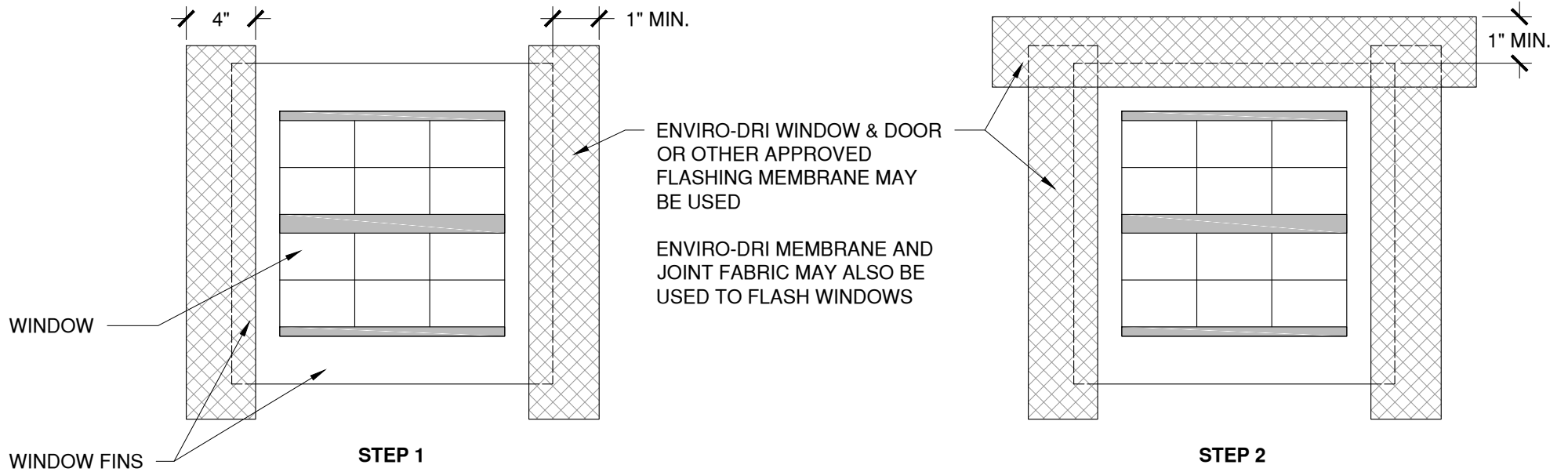
Checked by: JS

Scale: NTS

Date: 3/3/2021

File Name:

ED-F-03



3735 Green Road, Beachwood, OH 44122
Phone : 866-209-2404

Project:
Detail: Enviro-Dri at Window Flashing Installation

This detail is intended for conceptual purposes only.

Drawn by: KAB

Checked by: JS

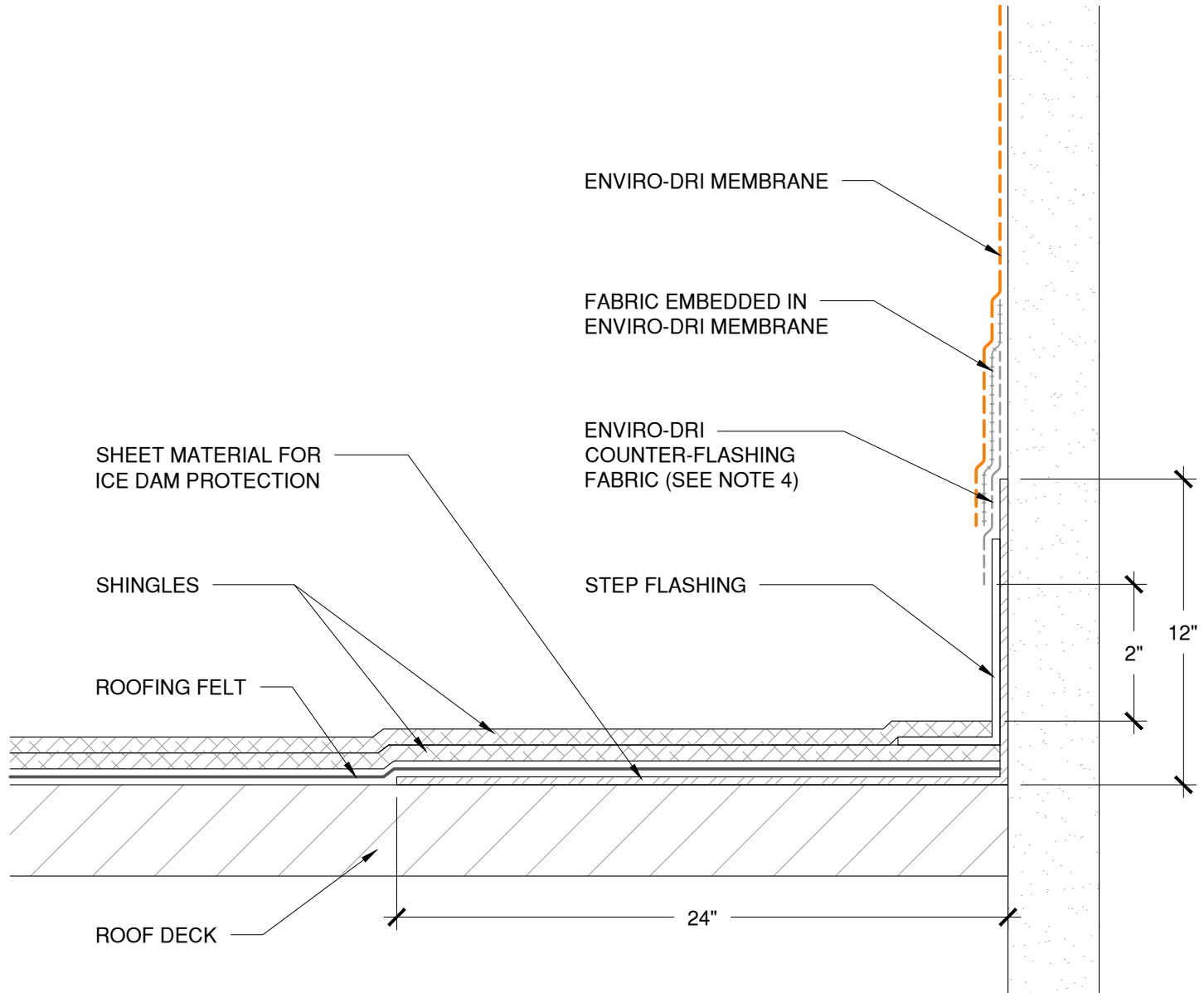
Scale: NTS

Date: 3/3/2021

File Name:

ED-F-04

NOTE: ENVIRO-DRI MEMBRANE IS OPTIONAL
UNDER COUNTER FLASHING FABRIC



ENVIRO-DRI JOINT FABRIC
EMBEDDED IN ENVIRO-DRI

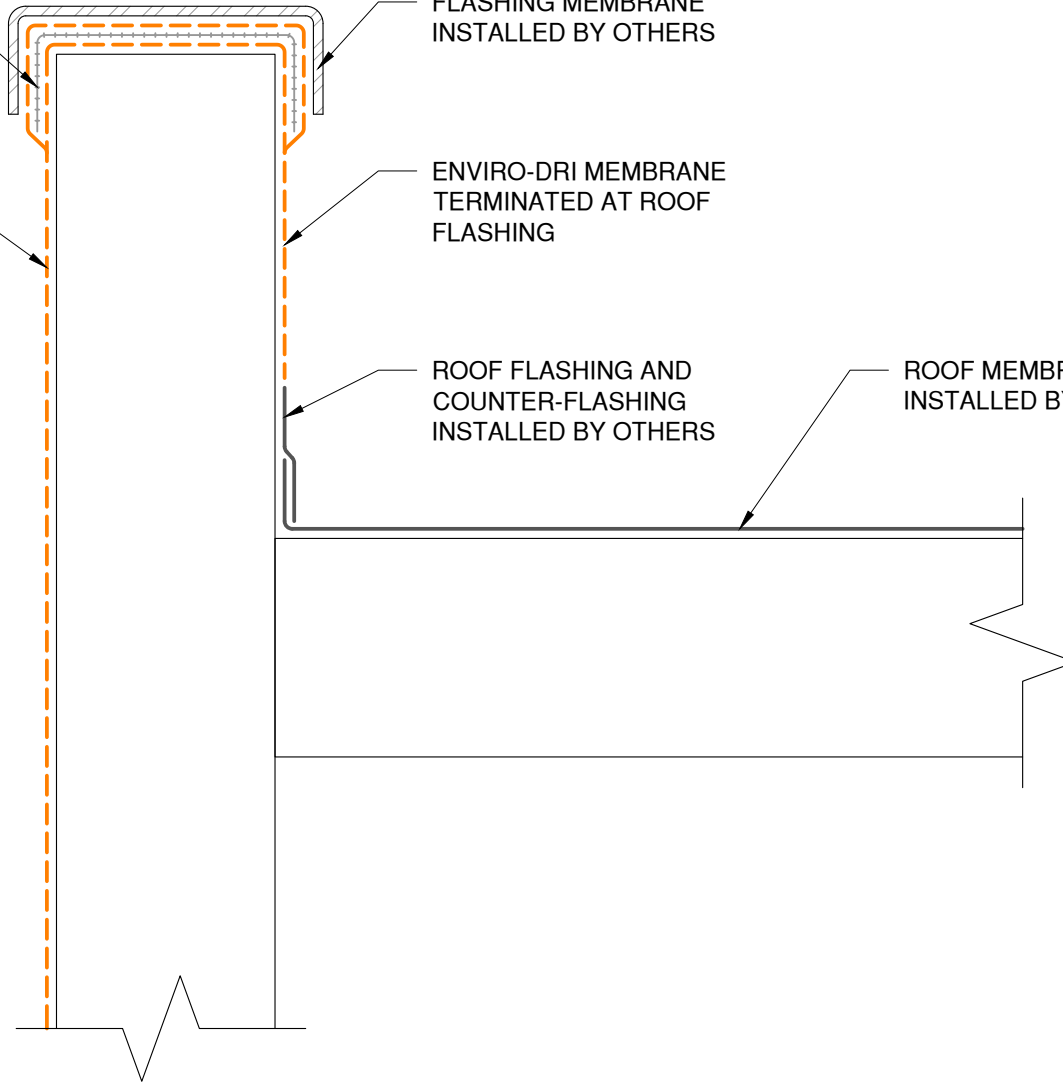
ENVIRO-DRI MEMBRANE

FLASHING MEMBRANE
INSTALLED BY OTHERS

ENVIRO-DRI MEMBRANE
TERMINATED AT ROOF
FLASHING

ROOF FLASHING AND
COUNTER-FLASHING
INSTALLED BY OTHERS

ROOF MEMBRANE
INSTALLED BY OTHERS



3735 Green Road, Beachwood, OH 44122
Phone : 866-209-2404

Project:

Detail: Enviro-Dri at Flat Roof Parapet Wall

This detail is intended for conceptual purposes only.

Drawn by: KAB

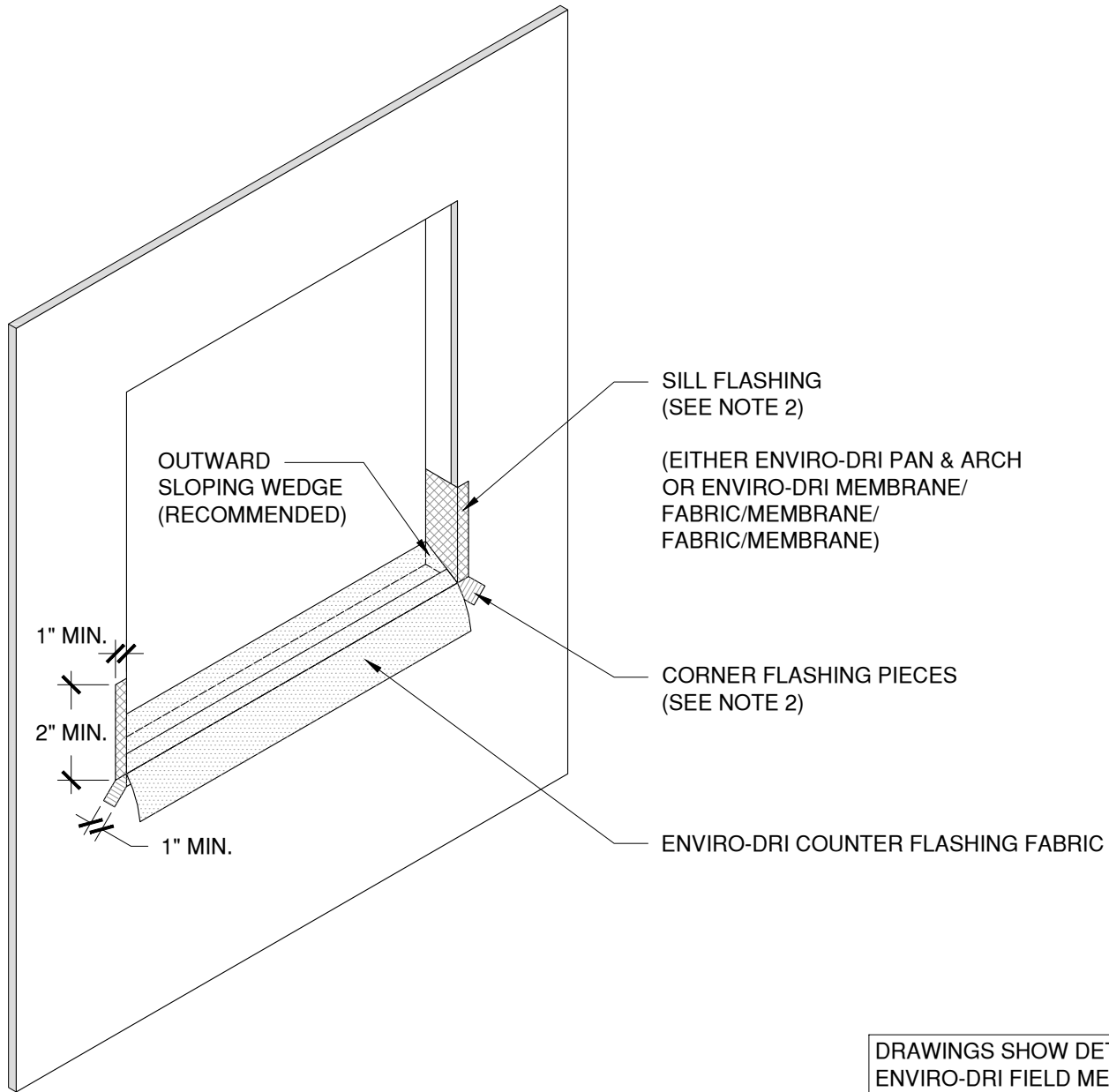
Checked by: JS

Scale: NTS

Date: 3/3/2021

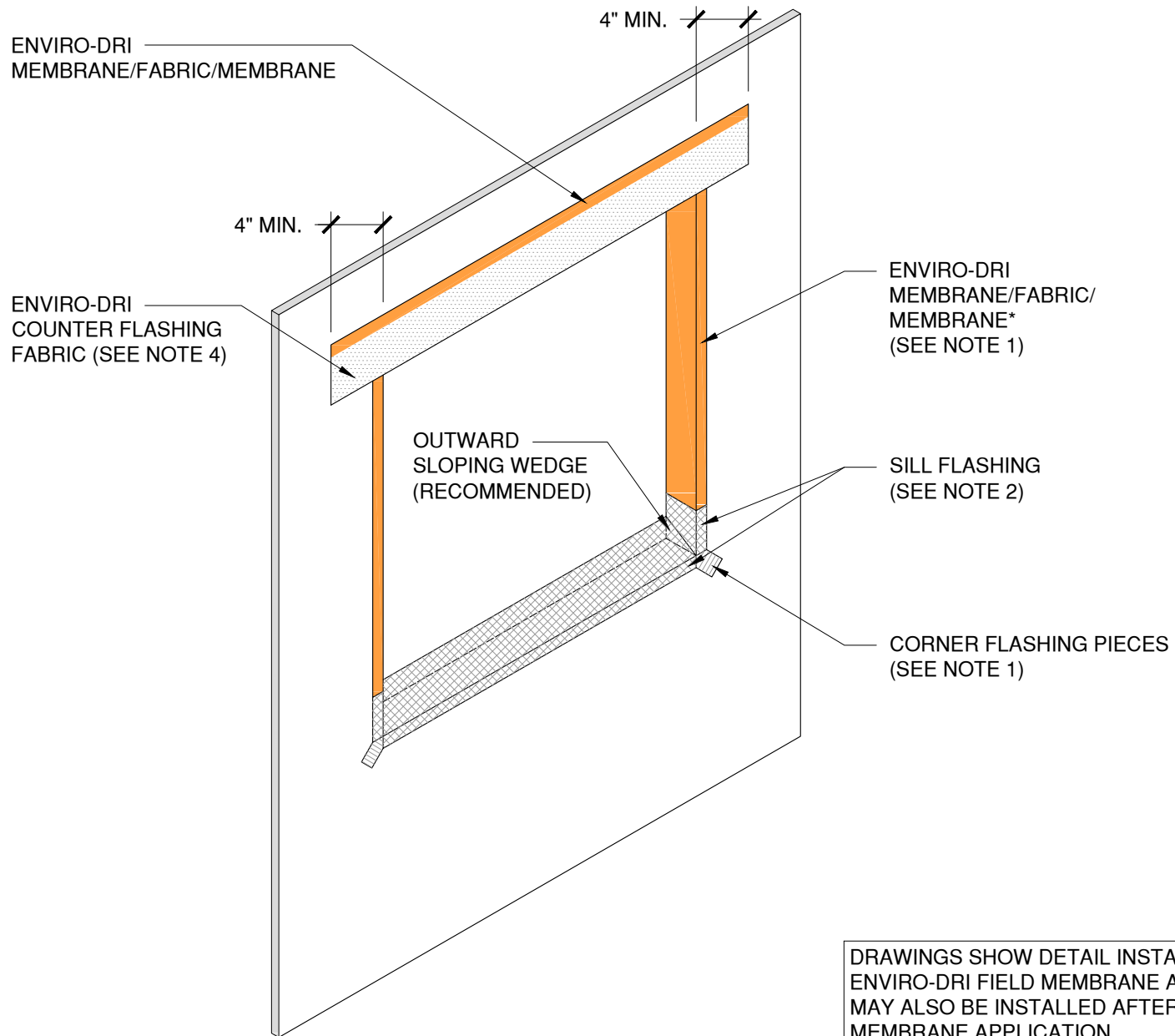
File Name:

ED-R-02



DRAWINGS SHOW DETAIL INSTALLATION PRIOR TO ENVIRO-DRI FIELD MEMBRANE APPLICATION. DETAILS MAY ALSO BE INSTALLED AFTER ENVIRO-DRI FIELD MEMBRANE APPLICATION.

*EITHER PEEL AND STICK OR ENVIRO-DRI
MEMBRANE/FABRIC/MEMBRANE



DRAWINGS SHOW DETAIL INSTALLATION PRIOR TO ENVIRO-DRI FIELD MEMBRANE APPLICATION. DETAILS MAY ALSO BE INSTALLED AFTER ENVIRO-DRI FIELD MEMBRANE APPLICATION.

